

HDL-MASTH.2C

Ceiling Mount Temp. Humidity & LUX Sensor

buspro

Datasheet

Issued: July 17, 2019

Edition: V1.0.0



Figure 1. Ceiling Mount Temp. Humidity & LUX Sensor

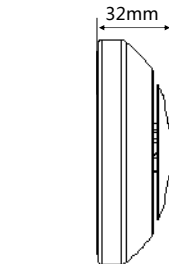
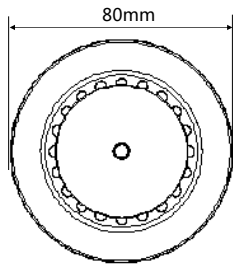


Figure 2. Dimensions - Front View

Figure 3. Dimensions - Side View

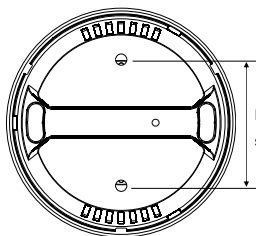


Figure 4. Dimensions - Back View

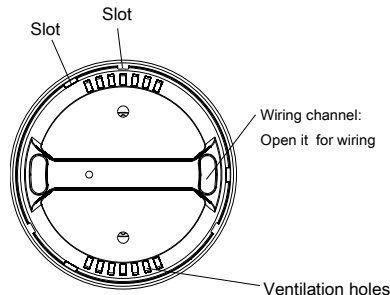


Figure 5. Components - Back View

HDL Buspro, from left to right GND, 485-, 485+, 24V DC

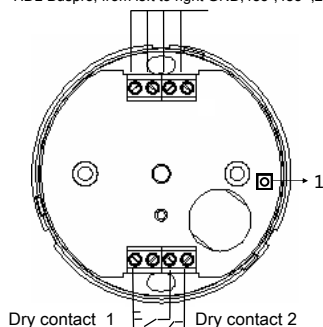


Figure 6. Wiring

Overview

Ceiling Mount Temp. Humidity & LUX Sensor (See Figure 1) is a sensor with built-in temperature sensor, LUX sensor, humidity sensor, dry contact input and external universal switch. The logic in the sensor can manage all different conditions of sensors to control different targets and achieve different functions. The sensor supports HDL security function and security command.

Functions

- Built-in LUX sensor, temperature sensor, humidity sensor, 2 channels dry contact input, 2 universal switches, logic
- 2 logical relations: OR, AND
- 24 logic module functions, targets can be controlled regardless of the logic is true or false
- The range of universal switch number in logic function is 201-248, each logic has 2 universal switch numbers.
- Multiple control targets: Scene Switch, Sequence Switch, Universal Switch, Single Channel Lighting Control, Broadcast Scene Or Channel, Curtain Switch, GPRS, Panel Control, Security Module, Music Play, etc.
- Supports update via HDL Buspro.

Important Notes

- Installation position - Indoor, away from AC outlet and heat source
- Operation temperature: 0 - 36 °C
- Buspro cable - CAT5E or dedicated HDL Buspro cable.
- Buspro connection - Series connection (hand-in-hand recommended).
- Installation - Ceiling mount.

Product Information

Dimensions - See Figure 2 - 4

Components - See Figure 5

1. **Module indicator:** Keep pressing the button for 3 seconds, the indicator will turn green, then the address of the module can be read and modified in the HDL Buspro Setup Tool according to following steps: Address Management → Address modification.

Wiring - See Figure 6

Installation - See Figure 7 - 9

Step 1. Fix the Ceiling Mount Temp. Humidity & LUX Sensor in the wall box with screws.

Step 2. Put the cover on the sensor.

Safety Precautions



- The installation and commissioning of the device must be carried out by HDL or the organization designated by HDL. For planning and construction of electric installations, the relevant guidelines, regulations and standards of the respective country are to be considered.
- HDL takes no responsibility for all consequences caused by installation and wire connection which are not in accordance with this document.
- Please do not privately disassemble the device or change components, otherwise it may cause mechanical failure, electric shock, fire or body injury.
- Please resort to our customer service department or designated agencies for maintenance service. The warranty is not applicable for the product fault caused by private disassembly.

Package Contents

HDL-MASTH.2C*1 / Screw*2 / Datasheet*1

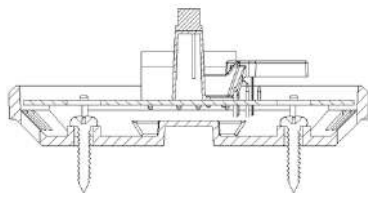


Figure 7

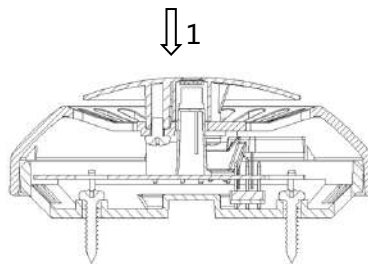


Figure 8

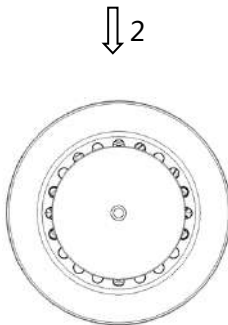


Figure 9

Figure 7 - 9. Installation

Technical Data

Basic Parameters

Working voltage	12~30V DC
Working current	25mA/24V DC
Range of temperature sensor	-20°C~+60°C
Range of LUX sensor	0~5000Lux
Range of humidity sensor	20%~95%

External Environment

Working temperature	-5°C~45°C
Working relative humidity	≤90%
Storage temperature	-20°C~60°C
Storage relative humidity	≤93%

Specifications

Dimensions	80(Diameter)×32(mm)
Net weight	92.5g
Housing material	ABS
Installation	Ceiling mount (See Figure 7- 9)
Protection rating (Compliant with EN 60529)	IP20

Name and Content of Hazardous Substances in Products

Components	Hazardous substances					
	Lead (Pb)	Mercury (Hg)	Cadmium (Cd)	Chromium VI (Cr (VI))	Poly-brominated biphenyls (PBB)	Poly-brominated diphenyl ethers (PBDE)
Plastic	o	o	o	o	o	o
Hardware	o	o	o	o	-	-
Screw	o	o	o	×	-	-
Solder	×	o	o	o	-	-
PCB	×	o	o	o	o	o
IC	o	o	o	o	×	×

The symbol “-” indicates that the hazardous substance is not contained.

The symbol “o” indicates that the content of the hazardous substances in all the homogeneous materials of the component is below the limit requirement specified in the Standard IEC62321-2015.

The symbol “×” indicates that the content of the hazardous substance in at least one of the homogeneous materials of the part exceeds the limit requirement specified in the Standard IEC62321-2015.

HDL Buspro Cable Guide

HDL Buspro	HDL Buspro Cable	CAT5/CAT5E
DATA+	Yellow	Blue/Green
DATA-	White	Blue white/Green white
COM	Black	Brown white/Orange white
24V DC	Red	Brown/Orange

Follow us



HDL QA Automation

Website : www.hdl.qa

E-mail : info@hdl.qa